

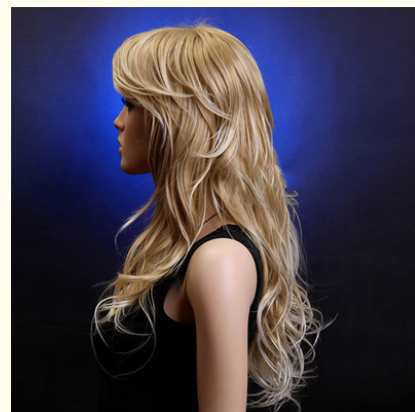


Natural Hairline Full Lace Human Hair Wigs With Bangs / Wet And Wavy Hair Extensions

Our Product Introduction

Basic Information

- Place of Origin: china
- Brand Name: Ellawig
- Certification: BV,MA,AL
- Model Number: HW 32-0210
- Minimum Order Quantity: 100
- Price: Negotiable
- Packaging Details: polybag/bundle + DHL/Fedex bag
- Delivery Time: 2-5days
- Payment Terms: Western Union, MoneyGram, T/T,Paypal,card, bank transfer ect
- Supply Ability: At least 10000 kilos per Month



Product Specification

- Lace Wig Type: Full Lace Wig
- Density: 120% (130%, 150% 180% Ect)
- Base Material: Swiss Lace, Medium Brown
- Style: Wet And Wavy (Straight, Body Wave, Loose Wave, Curly Ect)
- Hair Color: Natural Black #1b,can Be Bleached
- Shipping: DHL / FEDEX 2-4 Days Delivery
- Highlight: **full lace remy human hair wigs,
full lace human hair wigs with bangs**

for more products please visit us on ladyshairextensions.com

Product Description

Natural Hairline Full Lace Human Hair Wigs With Bangs / Wet And Wavy Hair Extensions

Advantage

1. 100% virgin remy human hair .
2. Natural hairline on the top, it looks more natural.
3. We can produce it according to your detailed requirements.
4. Very soft, good hand feeling. Very clean, no any lice or nits.
5. Steady supplying ability, more than 500kg added everyday.
6. Fast shipping, 3 days to USA Ca. , and 4 days to most Euro. at working time.
7. Big Discount for large order (more than 100pcs) .
8. Can keep the texture after washing, long time lasting. (About 1 -2 years)
9. No mix any synthetic hair, 100% pure natural human hair.
10. We will give you the Best after-sales service. Our workers will keep in touch with you anytime .

Hair detail

Guangzhou Super Hair Imp & Exp Co. Ltd	
Grade	Virgin human hair
Hair Material:	100% Remy Virgin human hair from one donor
Hair Color:	Natural color 1b
Texture available:	Wet and wavy (Straight, Body wave, Deep wave, Loose wave, Curly, Kinky curly ect)
Available Length:	8inch- 30inch
Weight:	About 300gram
Advantage:	It's natural color
	No chemical process
	No smell & long lasting
	Thick bottom & full cuticle
	No tangle & No shedding
	100% original virgin remy hair
MOQ	1pcs
Payment:	PayPal, T/T, Money Gram, Western Union, card
Delivery Time:	Within 24 hours in stock OEM order within 3-20 days (customized order)
We welcome you to visit our company. For further information, please don't hesitate to contact us!	

Better quality

1. Double layers weft much stronger to prevent the hair shedding.
2. Full cuticles intact and aligned to prevent hair tangle. Natural color, can be dyed.
3. Absolutely full thick hair bottom smooth and no split end.

How to measure the wig

Circumference → Frontal to nape → Ear to ear across forehead → Ear to ear across top → Temple to temple around back → Nape of neck

	Small (Inch)	Medium (Inch)	Large (Inch)
Circumference	21.5	22.25	23.25
Front To Nape	13.5	14.5	15.5
Ear to Ear Across Forehead	11	11.5	11.5
Ear to Ear Top Head	12	12.5	13.5
Temple To Temple Round Back	14.5	15.5	16.5
Nape Of Neck	5	5.5	6

Hair care

1. Get ready for everything and wet the hair with warm water
2. Soak the hair with mild shampoo for a few minutes
3. Use clean water rinse your hair clean
4. Use the towel to wipe clean the hair on the water
5. Don't use too much effort to wipe the hair of the tail
6. Comb curly hair gently with your fingers
7. Can sort out a few times, but do not use a comb
8. Hang the hair with the weft open and air-dry it and curls holds well

RFQ

Q1. Is the hair virgin unprocessed?

A: Yes, the hair is cut from one donor with full cuticle aligned, no acid bath, natural unprocessed.

Q2. Will the hair shedding or tangle?

A: The hair is double weft weaving with no shedding. And as virgin cuticle aligned with no tangle. It could last over 2 years if taken good care.

Q3. Why the hair has grey hair?

A: As virgin hair, we keep its original state. We will pick out the grey hair before packing, but kindly understand there might be some minimum exist in the bundle

Q4. Can they be straightened, curled and colored?

A: It is real human hair with high quality, you can curled, colored or straightened them, but don't do it frequently, otherwise the heat will make the hair easily get dry and tangled. And you can go to your hair stylist for assistance.

Q5. Why are my hair extensions getting tangle sometimes?

A: It may happen if the hair is too dry. Please make sure to wash & condition your hair at least once a week, twice a week is better. When you comb the hair, comb from the tips, then upper and upper, please don not comb your hair, especially long hair from top to end directly.

Q6. How long is the processing for the shipment time?

A: There will be a 24-hour payment verifying time by aliexpress, we will ship the goods within 24 hours after the verifying time, shipment will take 3-5 days.

Q7. What is your Returns/Exchange policy?

A: All returns will be considered on a case by case basis. All hair must be in the original packaging with all labels still attached. Unravellled or used bundles could not be returned or exchange.



Ellawig companys



+86-15399918960



service@ellawigss.com



ladyshairextensions.com

Room 501, unit 6, building 20, North Lane, east flower market, Beijing